

Releasing Information to the Public

Victorian Spatial Council Forum

08 November 2011

Janelle Ryan, Project Manager – Information Management



Source: <http://www.flickr.com/photos/jwyg/4528443760/> Accessed 07 Nov 11

Department of Transport



Releasing information to the public

- Current data access arrangements
- Growing demand for reusable 'high-value' data
- Victorian Public Service and Government support more open access
- Case study
- Initiatives to increase access

Current access to data and information

The screenshot displays the VISTA 07 website interface. At the top left is the logo for the State Government of Victoria, Department of Transport, Victorian Integrated Survey of Travel and Activity (VISTA). The main header area contains the title "Victorian Integrated Survey of Travel Activity 2007 (VISTA 07)" and a welcome message. Below the header is a navigation menu with various report categories. The main content area features several data visualizations: a bar chart for "Summary - All Trips", a bar chart for "Mode Share - Based on Trips", a horizontal bar chart for "Mode Share - Work Travel", a line graph for "Daytime Population", a map for "Municipality Catchment Map", and a bar chart for "Distance Travelled by Purpose". On the right side, there are links for "VISTA 07 Survey Overview", "VISTA 07 Survey Forms", and "VISTA Summary Data".

DEPARTMENT OF TRANSPORT
Victorian Integrated Survey
of Travel and Activity
(VISTA)

Reports

- Summary - All Trips
- Summary - Work Journeys
- Summary - Education Journeys
- Mode Share - Based on Trips
- Mode Share - Based on Distance
- Mode Share - Work Travel
- Mode Share - Education Travel
- Daytime Population
- Municipality Catchment Map
- Travel Destinations
- Distance Travelled by Purpose
- Cumulative Daily Travel

Victorian Integrated Survey of Travel Activity 2007 (VISTA 07)

VISTA 07 is a survey of personal travel by residents of Melbourne, Geelong and the regional centres of Ballarat, Bendigo, Shepparton and Latrobe. By collecting all travel made by surveyed household members, from a walk around the block to a trip interstate, data from VISTA 07 will enhance our understanding of the complex travel interactions occurring in our communities.

Summary data from a selection of key VISTA 07 travel themes is available by clicking on the screenshots below. A full list of currently available themes is available in the left-hand menu bar. Survey forms and summary documentation can be found in the right-hand menu of this screen.

For more information about VISTA 07, please contact the survey team at vista@transport.vic.gov.au. Comments on the usability of the website are welcomed, as are suggestions for additional summary themes.

Access to VISTA 07 data from this website is subject to the following [terms of use](#).

Summary - All Trips

Mode Share - Based on Trips

Mode Share - Work Travel

Daytime Population

Municipality Catchment Map

Distance Travelled by Purpose

VISTA 07 Survey Overview
Survey Overview [PDF](#)

VISTA 07 Survey Forms
Travel diary cover [PDF](#)
Travel diary page [PDF](#)
Household Form [PDF](#)
Person Form [PDF](#)
Vehicle Form [PDF](#)
Income Question [PDF](#)

VISTA Summary Data
Comparison of travel in Melbourne, Geelong and selected regional centres [PDF](#)

Powered by SuperSTAR
Space-Time Research

Growing expectation for release of geospatial data

“...but it seems there are no plans to release timetable data publicly”

Melbourne to get Google Transit eventually, but data to remain secret?

August 23rd, 2011 (Media releases)

The Public Transport Users Association (PTUA) has learnt that moves are underway to include Melbourne's public transport timetables in Google Transit, but it seems there are no plans to release timetable data publicly.

PTUA President Daniel Bowen said that Google Transit had timetable data for over four hundred cities around the world [1], including all services in Perth and Adelaide, making public transport trips easier to plan. Part of the popular Google Maps service, Google Transit provides trip-planning capabilities, and many PTUA members have remarked that it is easier to use than Melbourne's official Melink journey planner, including on portable devices such as smartphones.

"Years after we suggested that Melbourne be added, we've now learnt that the Department of Transport has met with Google and it's underway. At last, it seems it will – eventually – happen", said Mr Bowen. "When it finally arrives, it will be a big plus to passengers."

But Mr Bowen said that public transport timetable data should be made freely available for other software developers to use.

"Getting the information out there is a way of better promoting public transport, particularly to gadget-loving commuters, who would be only too happy to give up carrying paper timetables in favour of checking their phone or iPad."

26

Tweet

Like

Like

“...public transport timetable data should be made freely available for other software developers to use”

Plans for more open access to government data

- Inquiry into Improving Access to Victorian Public Sector Information and Data
- Public Sector Information Release Framework (PSIRF)
 - Information management and release of data
- Government 2.0 Action Plan
 - App my State

Draft PSIRF Structure

Mandatory

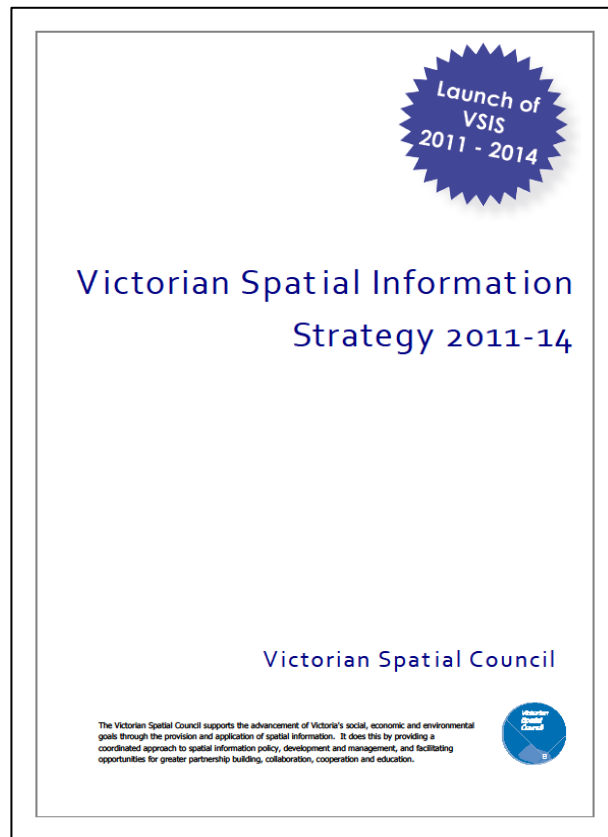
Principle 1 PSI will be released	Principle 2 PSI will be released under an appropriate licence	Principle 3 PSI will be free	Principle 4 PSI will be discoverable	Principle 5 PSI will be usable	Principle 6 PSI will have an assigned custodian	Principle 7 The PSIRF will have assigned accountabilities
Release standards <ul style="list-style-type: none">• <i>Default open access</i>• <i>Exceptions - privacy, security and ownership</i>• <i>Suggestions and feedback</i>	Licensing standards <ul style="list-style-type: none">• <i>Creative commons</i>• <i>Tailored licence</i>• <i>Least restrictive rights applied</i>	Pricing standards <ul style="list-style-type: none">• <i>No or minimal cost (unless meets criteria)</i>	Discoverability standards <ul style="list-style-type: none">• <i>Released via web</i>• <i>Metadata</i>• <i>Information asset register</i>	Usability standards <ul style="list-style-type: none">• <i>Formats that encourage reuse</i>	Custodianship standards <ul style="list-style-type: none">• <i>Designated custodian in register</i>• <i>Collection, storage, maintenance and release of data</i>	Accountability standards <ul style="list-style-type: none">• <i>Agency heads responsible for compliance and reporting</i>

Guidelines, checklist and tools

Supporting technology e.g. data.vic.gov.au

Framework administration, advice and support

Enabling Victorian Spatial Information Strategy



Spatial information in Victoria – where we are today

Victorian Framework Components:

- Governance, custodianship
- Framework and Business Information, Data Quality
- Metadata, Awareness, Access, Pricing and Licensing, Privacy
- Technology and applications

A case for Open Data in Transit

Source: <http://vimeo.com/13764646>

STREETFILMS

Information and data

Metropolitan Train Peak Passenger Loads



Department of Transport

3.3 Ringwood Corridor

Note: The Ringwood Corridor includes trains originating from Lilydale, Mooroolbark, Balgrava, Upper Ferntree Gully, Ringwood and Blackburn stations in the AM and terminating at those stations in the PM.

- The May 2011 survey recorded a total of seven trains in the peak periods where passenger loads exceeded the benchmark. This is down from eight recorded in May 2010.
- There was no change in the number of trains on the Ringwood Corridor during the peak periods between the May 2010 and 2011 surveys.
- The percentage of passengers travelling on trains exceeding the benchmark on the Ringwood Corridor during the combined peak periods dropped from 14.7 per cent to 12.6 per cent between May 2010 and May 2011.

3.3.1 AM Peak

Figure 7 Passenger loading levels on the Ringwood Corridor for the AM Peak May 2007 to May 2011

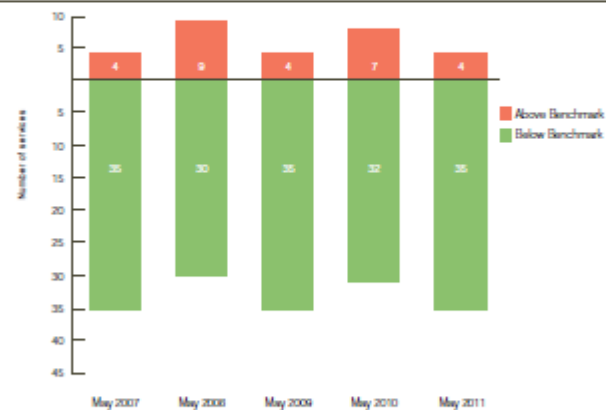
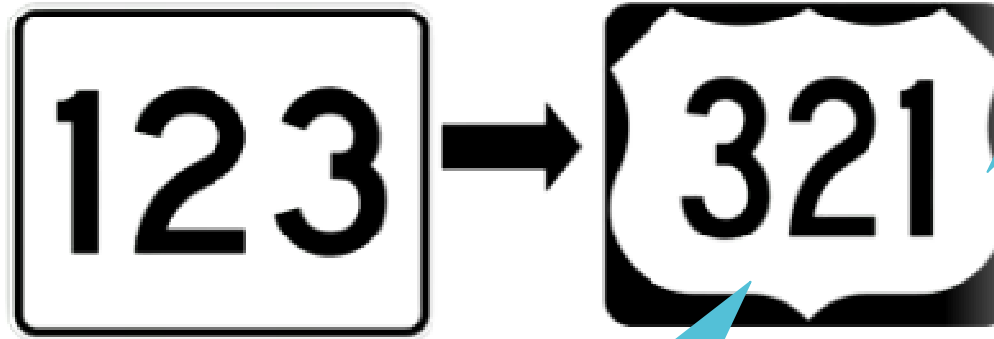


Table 7 Number of AM Peak services exceeding the benchmark

	May 2007	May 2008	May 2009	May 2010	May 2011
Number of services	4	9	4	7	4
Percentage of peak services	10.3	23.1	10.3	17.9	10.3
Percentage of passengers on services exceeding the benchmark	16.6	35.0	16.7	26.3	15.0

Open data requires paradigm shift

**WHAT IF WE REVERSED
THE ORDER?**



A lot easier
to do and
a lot less
expensive

Gives consumers
more choice